

Nottingham & Singapore Breast Pathology Masterclass

Online

Advances in Breast Pathology Diagnosis and Classification Part II

Part II

24 September 2026, 09:25 – 16:25 (UK)

Course Directors

Professor Emad Rakha
Professor Puay Hoon Tan

nottinghambreastpathologymasterclass.co.uk



Nottingham & Singapore Breast Pathology Masterclass

Advances in Breast Pathology Diagnosis and Classification

Led by Course Directors Professor Emad Rakha and Professor Puay Hoon Tan, the Nottingham & Singapore Breast Pathology Masterclass is designed to strengthen diagnostic precision and alignment in breast pathology.

Focusing on challenging diagnostic areas and the latest developments in tumour classification, the 2026 Masterclass brings together an international faculty of world-renowned experts, including members of the WHO editorial board and contributing authors.

This series provides the latest evidence-based insights in breast pathology. Part II builds on and completes the updates introduced in Part I, but participants do not need to have completed Part I to attend.

Tailored for practising pathologists, fellows and trainees, the fully online format offers convenient, flexible access to high-quality, expert-led education from anywhere in the world.

Part II – 24 September 2026

Scientific programme

- Latest advances in biphasic breast lesions
- Subtyping of invasive carcinomas
- Invasive lobular and mucinous carcinoma
- Non-invasive lobular and ductal neoplasia
- Inflammatory and sclerosing lesions of the breast
- Diagnostic errors in breast pathology
- Slide seminar and Q&A with the Faculty

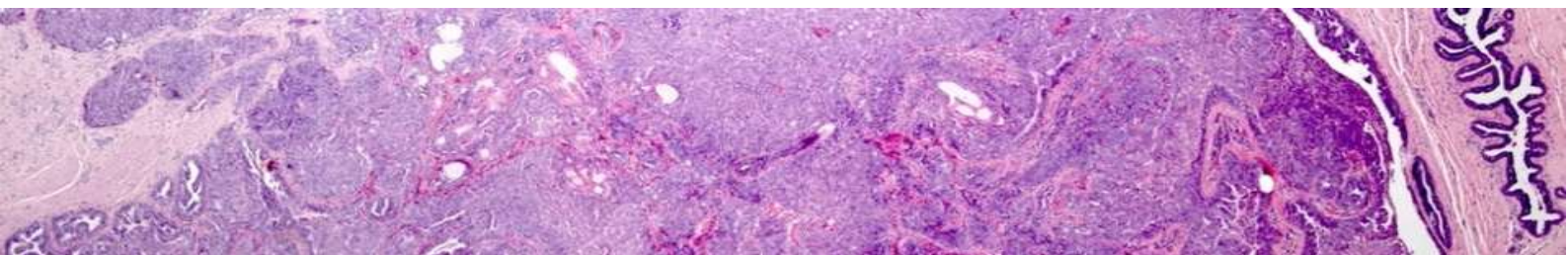
Faculty

- Professor Edi Brogi (USA)
- Professor Ian Ellis (UK)
- Professor Maria Pia Foschini (Italy)
- Professor Emad Rakha (UK)*
- Professor Abeer Shaaban (UK)
- Professor Puay Hoon Tan (Singapore)*
- Professor Gary Tse (Hong Kong)
- Professor Hannah Wen (USA)
- Professor Wentao Yang (China)

Moderator

- Dr Areeg Abbas

*Course Director



Nottingham & Singapore Breast Pathology Masterclass

Advances in Breast Pathology Diagnosis and Classification

Programme: Part II

24 September 2026

Time (UK)	Topic
09:25	Welcome <i>Professor Emad Rakha – Course Director</i>
09:30	Fibroepithelial Lesions: updates and unresolved issues <i>Professor Puay Hoon Tan</i>
10:00	Typing of Rare Invasive Breast Carcinoma: practical approaches and pitfalls <i>Professor Maria Pia Foschini</i>
10:30	Pitfalls in Breast Pathology <i>Professor Ian Ellis</i>
11:00	Break
11:15	Epithelial-Myoepithelial Tumours of the Breast: the WHO stance <i>Professor Puay Hoon Tan</i>
11:45	Sclerosing Lesions of the Breast: spectrum and mimics <i>Professor Wentao Yang</i>
12:15	Break
12:55	Benign Inflammatory Lesions of the Breast <i>Professor Emad Rakha</i>
13:25	Special Types of Breast Carcinoma: inflammatory, neuroendocrine and rare patterns <i>Professor Abeer Shaaban</i>
13:55	Invasive Lobular and Mucinous Carcinoma of the Breast: an update <i>Professor Edi Brogi</i>
14:25	Break
14:35	Slide Seminar: case review and interactive discussion* <i>Prof. H Wen, Prof. G Tse, Prof. W Yang, Prof. E Rakha</i>
15:35	Non-invasive Lobular and Ductal Neoplasia <i>Professor Hannah Wen</i>
16:05	Ask the Expert – Q&A session with the Faculty
16.25	Closing Remarks <i>Professor Puay Hoon Tan – Course Director</i>

*Cases will be circulated before the masterclass.

Nottingham & Singapore Breast Pathology Masterclass

Advances in Breast Pathology Diagnosis and Classification

Who is it for?

With a faculty of leading experts, the masterclass is ideal for practising pathologists, pathology fellows and trainees.

How do I attend?

It takes place online, so you can take part in expert-led education from your own home or office, wherever you are in the world. All sessions are recorded so if you can't attend the live event you can catch up at a time that suits you.

CPD

The masterclass is approved by the **Royal College of Pathologists** for a maximum of **8 CPD points** (6 for the masterclass and an additional 2 points for completing the slide survey circulated to delegates before the masterclass). Delegates should only claim points commensurate with the extent of their participation in the course

It is pending approval by the **Singapore Medical Council** for 4 CME points.



Register

Reserve your place at nottinghambreastpathologymasterclass.co.uk

	Early Bird			Full Course Fee		
Part II 24 September	Register by 30 July	Trainee	£51	Register from 1 August	Trainee	£60
		Full	£85		Full	£100

