

# Nottingham & Singapore Breast Pathology Masterclass

## Online

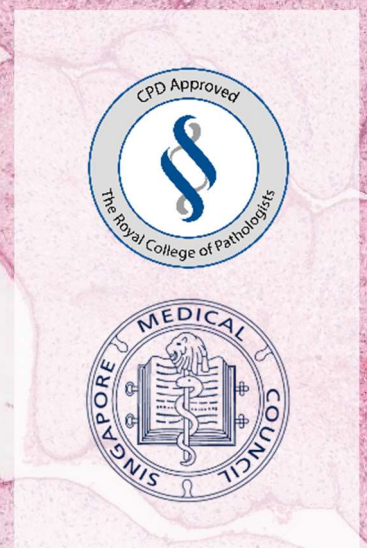
### Latest Updates to Breast Tumour Classification & Reporting – Part II

#### Course Directors

Professor Emad Rakha  
Professor Puay Hoon Tan

**Part II**  
25 September 2025, 09:25 – 16:00

[nottinghambreastpathologymasterclass.co.uk](http://nottinghambreastpathologymasterclass.co.uk)



# Nottingham & Singapore Breast Pathology Masterclass

Latest Updates to Breast Tumour Classification & Reporting

---

**The Nottingham and Singapore Breast Pathology Online Masterclass is brought to you by Course Directors Professor Emad Rakha and Professor Puay Hoon Tan.**

It aims to enhance diagnostic accuracy and concurrence in breast pathology, with a particular focus on diagnostically challenging areas and recent updates in tumour classification.

Presented by an international faculty of leading experts, including WHO editorial board members and contributing authors, the 2025 series delivers the latest evidence-based advances in breast tumour classification. The Part II session builds on and completes the updates introduced in Part I (May 2025).

Tailored for practising pathologists, fellows and trainees, the fully online format offers convenient, flexible access to high-quality, expert-led education from anywhere in the world.

## Part II – 25 September 2025

### Scientific programme

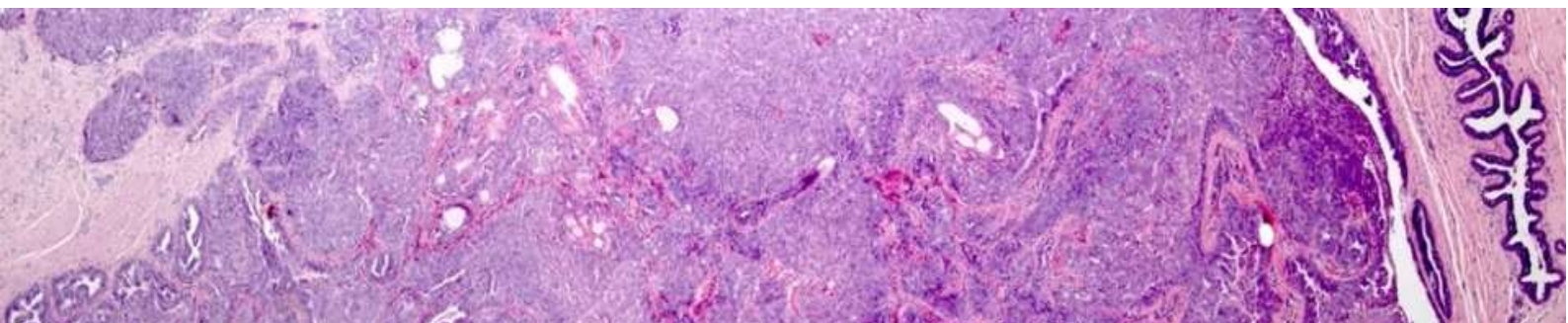
- Lobular lesions
- Adenomyoepitheliomas
- Salivary gland type tumours
- Neuroendocrine tumours
- Mucinous tumours
- Spindle cell tumours
- Sclerosing lesions
- Breast digital pathology and AI
- Slide seminar
- Q&A with the Faculty

### Faculty

- Professor Emad Rakha (UK)
- Professor Puay Hoon Tan (Singapore)
- Professor Ian Ellis (UK)
- Professor Janina Kulka (Hungary)
- Dr Elena Provenzano (UK)
- Professor Cecily Quinn (Ireland)
- Professor Abeer Shaaban (UK)
- Professor Stuart Schnitt (USA)
- Professor Hannah Wen (USA)
- Professor Wentao Yang (China)

### Moderator

- Dr Areeg Abbas



# Nottingham & Singapore Breast Pathology Masterclass

Latest Updates to Breast Tumour Classification & Reporting

## Programme: Part II

25 September 2025

Time	Topic
09:25	Welcome <i>Prof. Emad Rakha – Course Director</i>
09:30	Neuroendocrine Tumours of the Breast: Updates and Challenges <i>Prof. Puay Hoon Tan</i>
10:00	Breast Digital Pathology and Artificial Intelligence <i>Prof. Abeer Shaaban</i>
10:30	Challenging Aspects of Breast Disease Classification: Observations from referral practice and EQA <i>Prof. Ian Ellis</i>
11:00	Break
11:15	Salivary Gland Type Tumours of the Breast: Insights and updates <i>Prof. Wentao Yang</i>
11:45	Mucinous Neoplasms and Adenomyoepitheliomas: An update <i>Prof. Emad Rakha</i>
12:15	Sclerosing Lesions: Updates and diagnostic challenges <i>Prof. Cecily Quinn</i>
12:45	Break
13:15	Spindle Cell Lesions of the Breast <i>Dr. Elena Provenzano</i>
13:45	Challenging Lobular Lesions: Insights and pitfalls <i>Prof. Stuart Schnitt</i>
14:15	Slide Seminar: Viewing cases and case discussion* <i>Prof. Puay Hoon Tan, Prof. Janina Kulka, Prof. Hannah Wen</i>
15:30	Q&A with the Faculty
16:00	Close <i>Prof. Puay Hoon Tan – Course Director</i>

\*Cases will be circulated before the masterclass. Delegates completing the diagnosis survey will be awarded an additional 2 CPD points.

# Nottingham & Singapore Breast Pathology Masterclass

Latest Updates to Breast Tumour Classification & Reporting

## Who is it for?

With a faculty of leading experts, the masterclass is ideal for practising pathologists, pathology fellows and trainees.

## How do I attend?

It takes place online, so you can take part in expert-led education from your own home or office, wherever you are in the world. All sessions are recorded so if you can't attend the live event you can catch up at a time that suits you.

## CPD

The masterclass is approved by the **Royal College of Pathologists** for a maximum of **8 CPD points** (6 for the masterclass and an additional 2 points for completing the slide survey circulated to delegates before the masterclass). Delegates should only claim points commensurate with the extent of their participation in the course

It is approved by the **Singapore Medical Council** for 4 CME points.



## Register

Reserve your place at [nottinghambreastpathologymasterclass.co.uk](http://nottinghambreastpathologymasterclass.co.uk)

		Early Bird			Full Course Fee	
<b>Part II</b> <b>25 September</b>	Register by 31 July	Trainee	£50	Register from 1 August	Trainee	£60
		Full	£80		Full	£100

